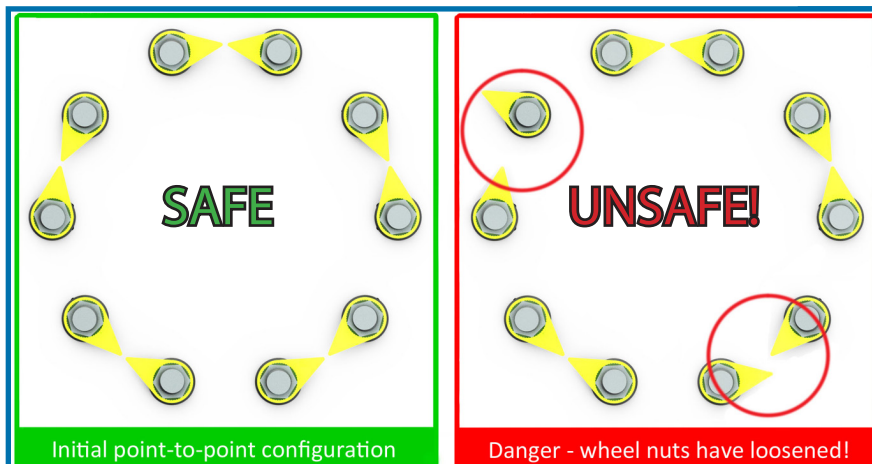
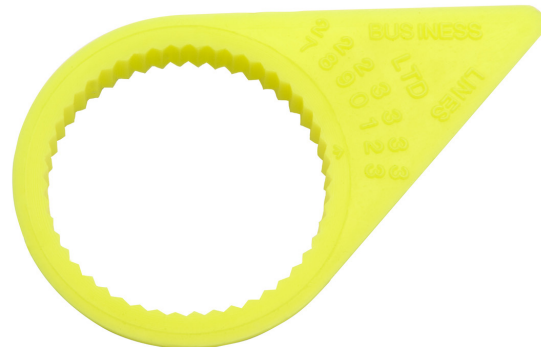




Checkpoint® is the original wheel nut movement indicator, manufactured exclusively in the UK and distributed globally. The Checkpoint® was the FIRST product in the global market to provide an indication of wheel nut movement on vehicles and this safety system concept has gradually spread from its UK origin throughout the world. The Checkpoint® wheel nut indicator is a core product from Checkpoint Safety and in high demand globally to include all of Western Europe, North America, Asia, Australasia, Sub Saharan Africa and South America with increasing sales in Eastern Europe and Northern Africa. The Checkpoint® is offered in a very large range of sizes to cover a wide scope of applications throughout industrial, agricultural, military, rail and commercial vehicle sectors amongst others.

Checkpoint Product: Nut movement indicator



The primary functions of Checkpoints® are to:

- ✓ Provide a clear visual indication of nut movement, particularly useful and applicable for commercial vehicle wheels
- ✓ Provide an indication of wheel overheating which is otherwise difficult to detect, usually as a result of brakes sticking or problems with the bearings
- ✓ Provide a clear visual commitment to roadworthiness and professionalism to other road users, customers, health and safety, road and transportation associations such as DFT, HMRC Customs and Excise, VOSA, FTA and RHA



The primary benefits of fitting Checkpoints® are:

- ✓ Improved safety of fittings where nuts are a critical structural component, such as on vehicle wheels, rail track and industrial/commercial structures
- ✓ Facilitates the ease of walk around and visual checks/audits to locate problems
- ✓ Reduced maintenance time/costs resulting from accurate locating of nut loosening or wheel overheating
- ✓ Reduction in vehicle downtime
- ✓ Improved professionalism, roadworthiness and company image/reputation
- ✓ Low cost, quick and easy solution to implement

Available* sizes

*Measured across flats of the nut. Stock levels can vary, depending on size and colour

Standard Colours

Fluoro Yellow

Red

Other available* Colours

*Subject to stock and/or minimum order quantity

Blue

Black

Drab Olive Grey

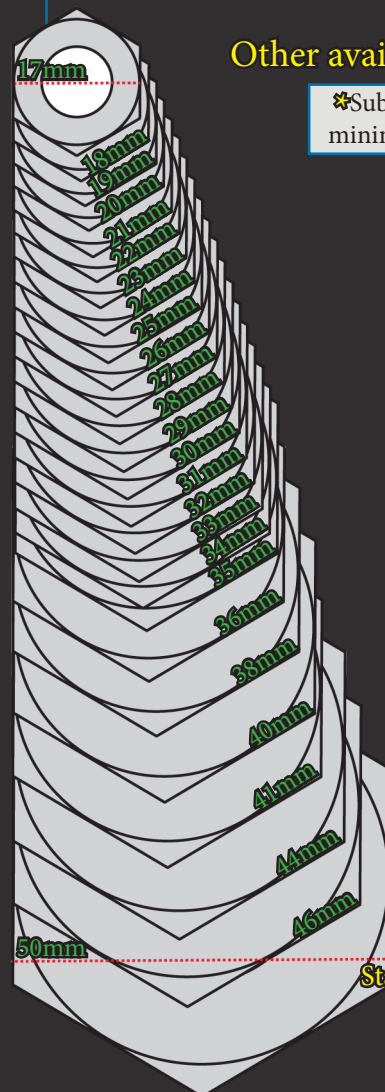
Green

Orange

Silver Grey

White

Solid Yellow



UHT 203 °C

HT 165 °C

Standard 125 °C

High Temp (HT) and Ultra High Temp (UHT) melting point options available with minimum order quantity. Checkpoint® SA (Short Arrow) and MA (Medium Arrow) info available on request.

Contact **Checkpoint Safety** for further information and ordering
+44 (0) 1524 271200  sales@checkpoint-safety.com
 www.checkpoint-safety.com