

WORKING MEDIUM : AIR  
 BETRIEBSMEDIUM : LUFT

COOLANT : WATER WITH ANTIFREEZE  
 KÜHLMEDIUM : WASSER MIT FROSTSCHUTZ

BORE :  $\varnothing$  85 mm  
 BOHRUNG :

STROKE : 62 mm  
 HUB :

SWEPT VOLUME : 704 cm<sup>3</sup>  
 HUBRAUM :

MAX. WORKING SPEED :  $n_{max} = 3000 \text{ min}^{-1}$   
 MAX. BETRIEBSDREHZAHL :

OVERSPEED (MAX. 4 SEC.) :  $n_{ue} = 1.3 \times n_{max}$   
 UEBERDREHZAH. (MAX. 4 SEC.) :

END PLAY OF CRANKSHAFT AXIALSPIEL DER KURBELWELLE : 0.1 ... 0.4 mm

LUBRICATION SUPPLIED FROM ENGINE UMLAUFSCHEMUNG MIT DRUCKÖLANSCHLUSS

MAX. WORKING PRESSURE :  $p = 14 \text{ bar} **$   
 MAX. BETRIEBSDRUCK :

MAX. PRESSURE (TEMPORARILY MAX. 4 SEC.) :  $p = 16 \text{ bar} **$   
 MAX. DRUCK (ZEITWEISE MAX. 4 SEC.) :

\*\* MEASURING POINT: DISCHARGE PORT  
 MESSPUNKT: DRUCKANSCHLUSS

MAX. PERMISSIBLE TILT DURING CONTINUOUS WORKING  
 MAX. ZULÄSSIGE NEIGUNG IM DAUERBETRIEB

0 SUCTION PORT SAUGANSCHLUSS

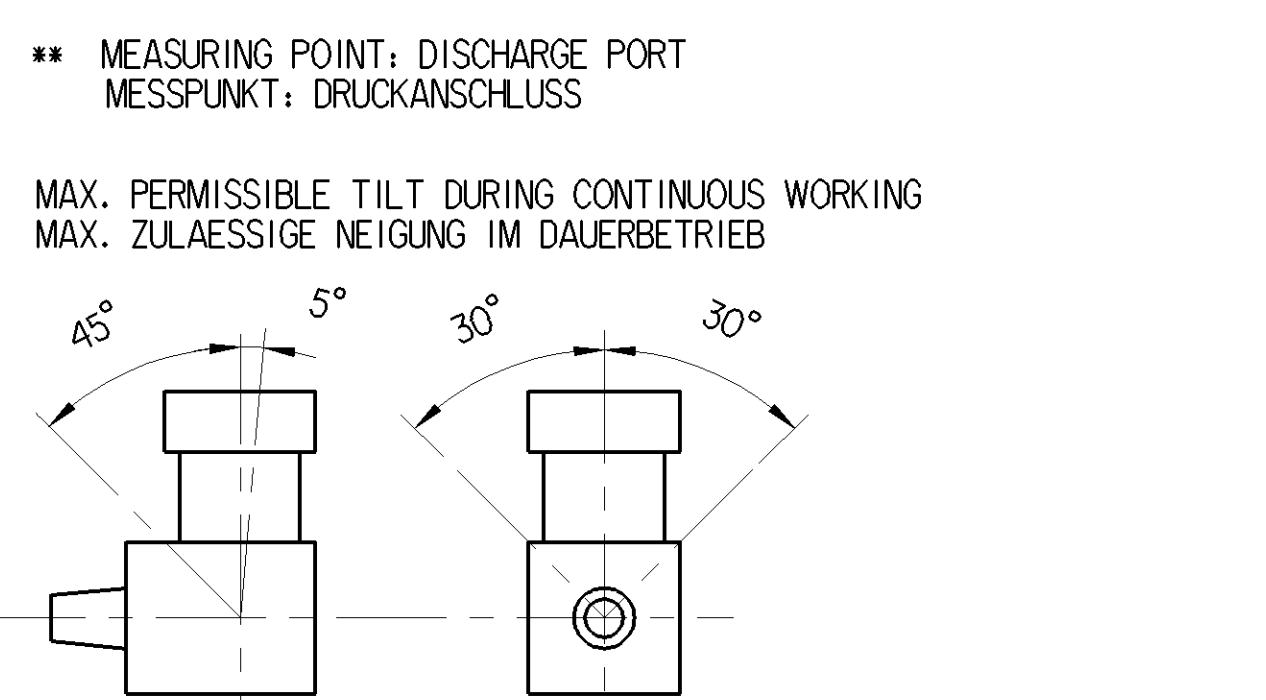
2 DISCHARGE PORT DRUCKANSCHLUSS  $M \leq 150 \text{ Nm}$

4 GOVERNOR PORT STEUERANSCHLUSS  $M \leq 25 \text{ Nm}$

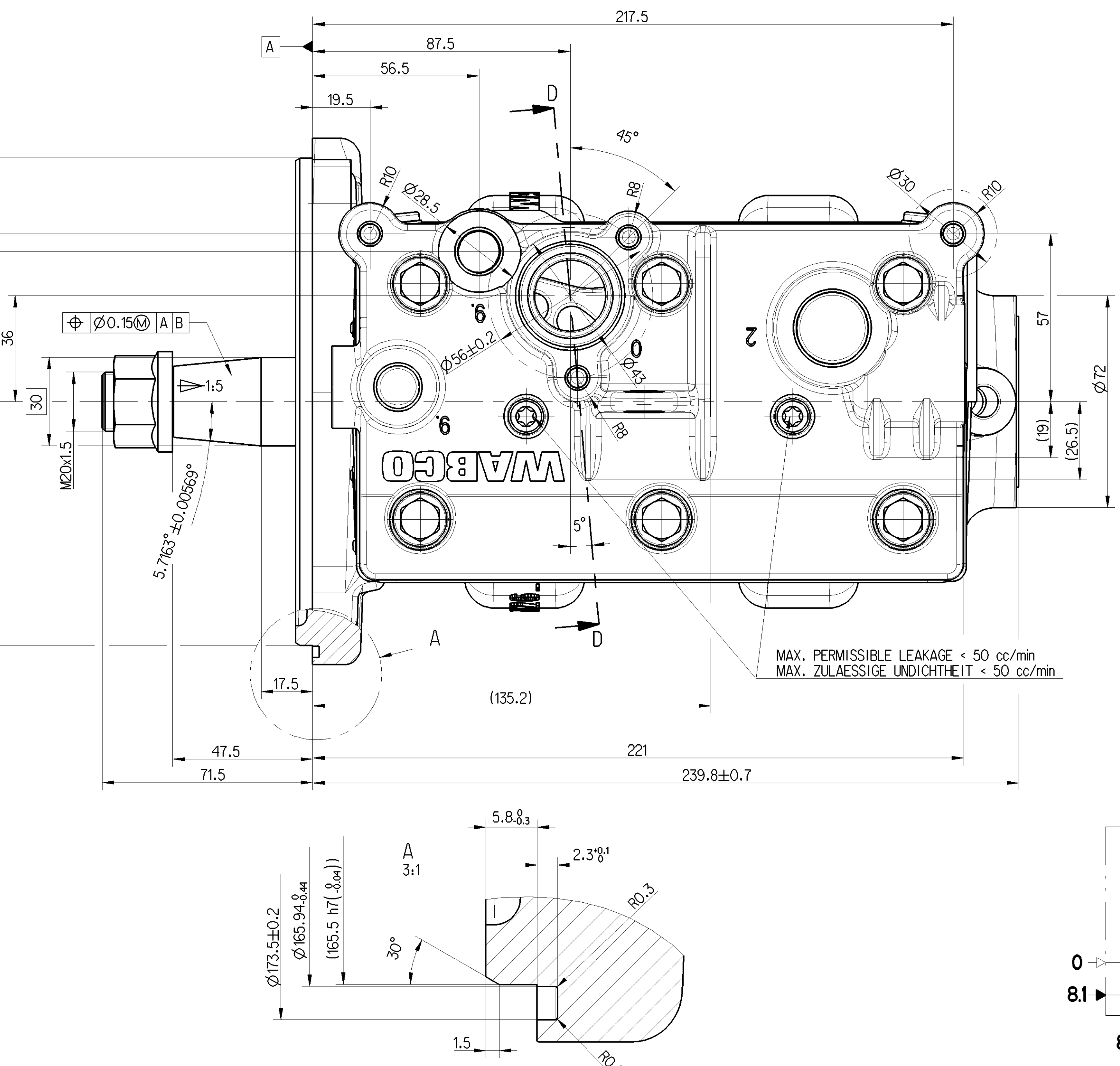
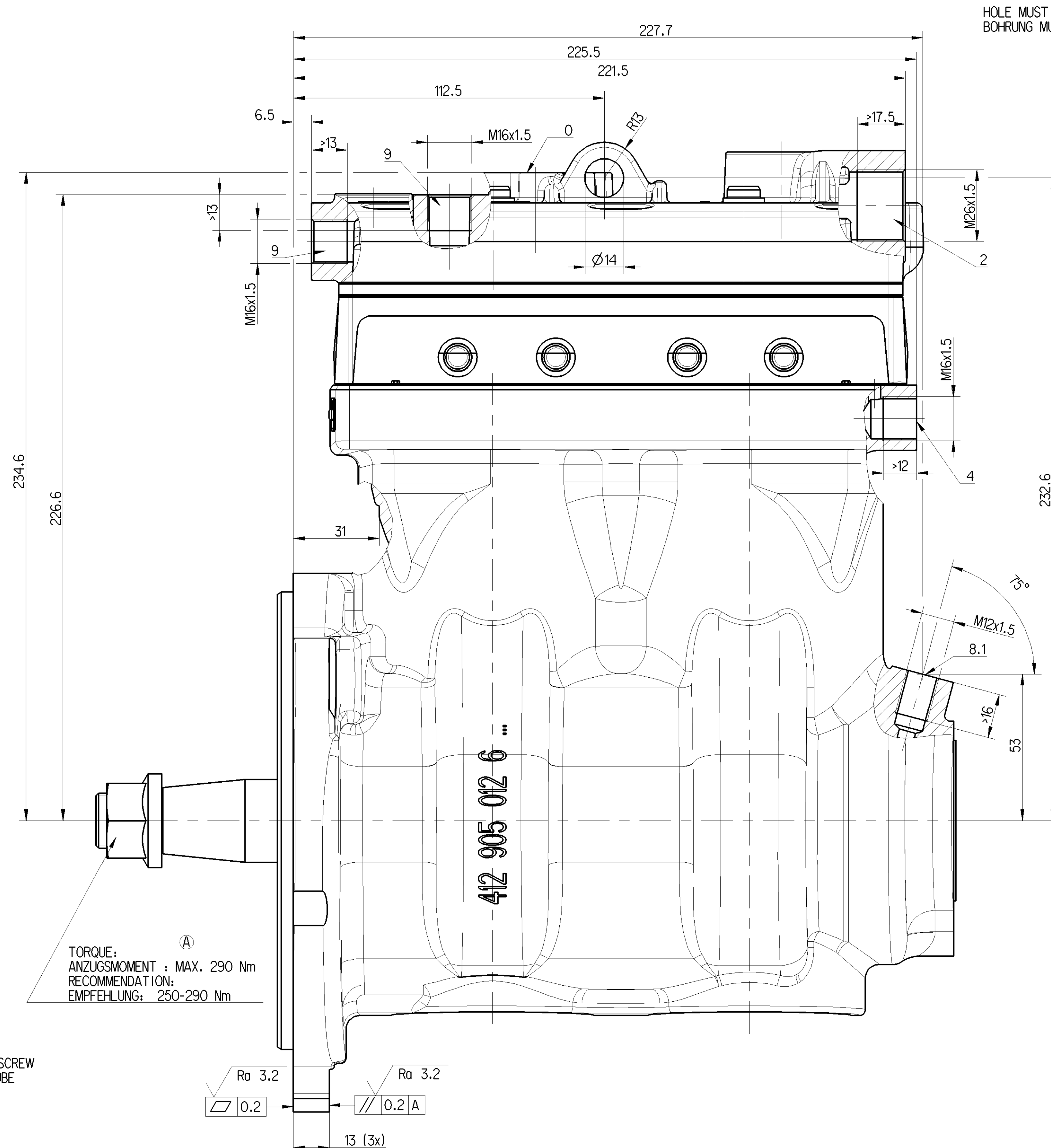
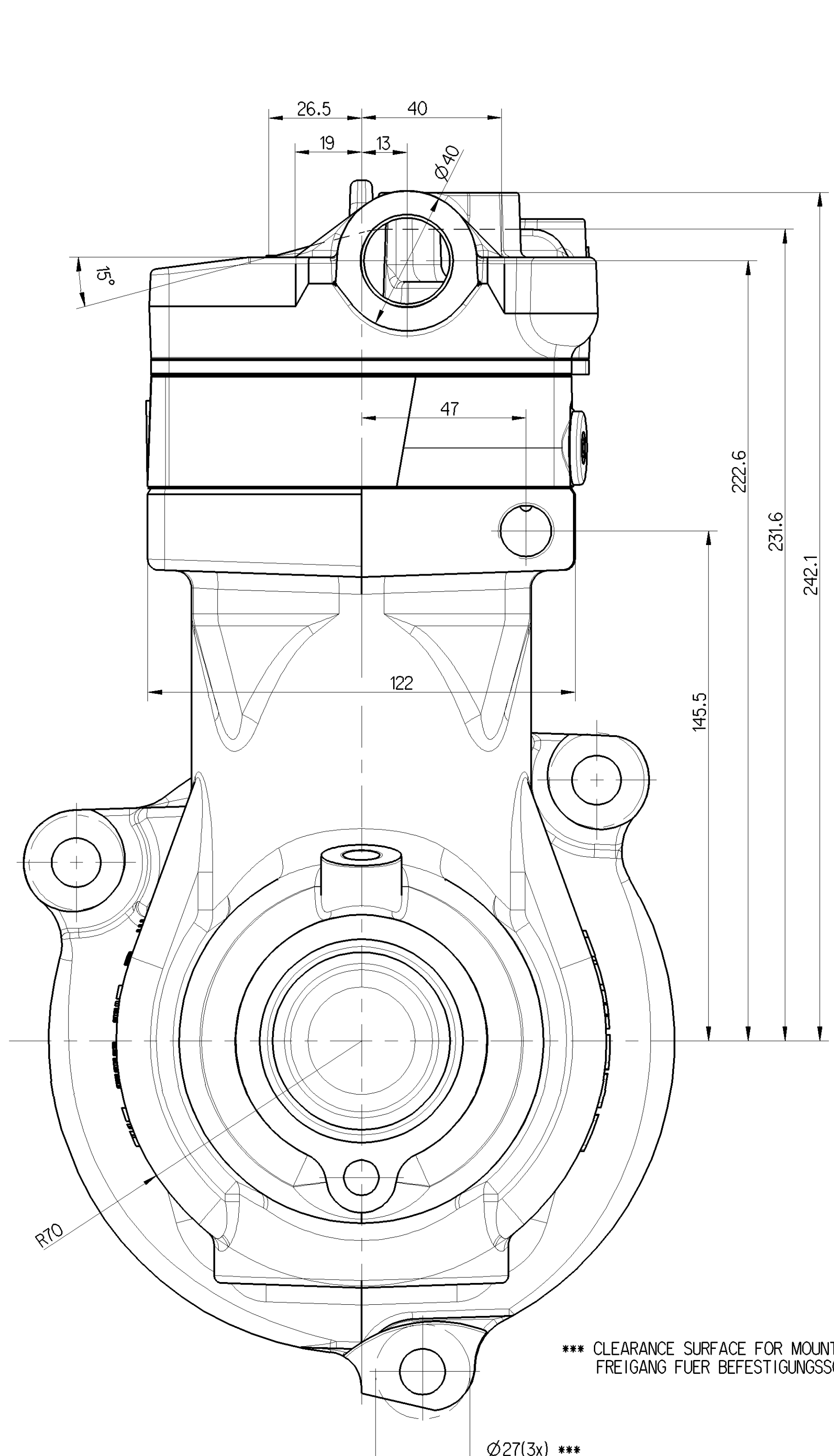
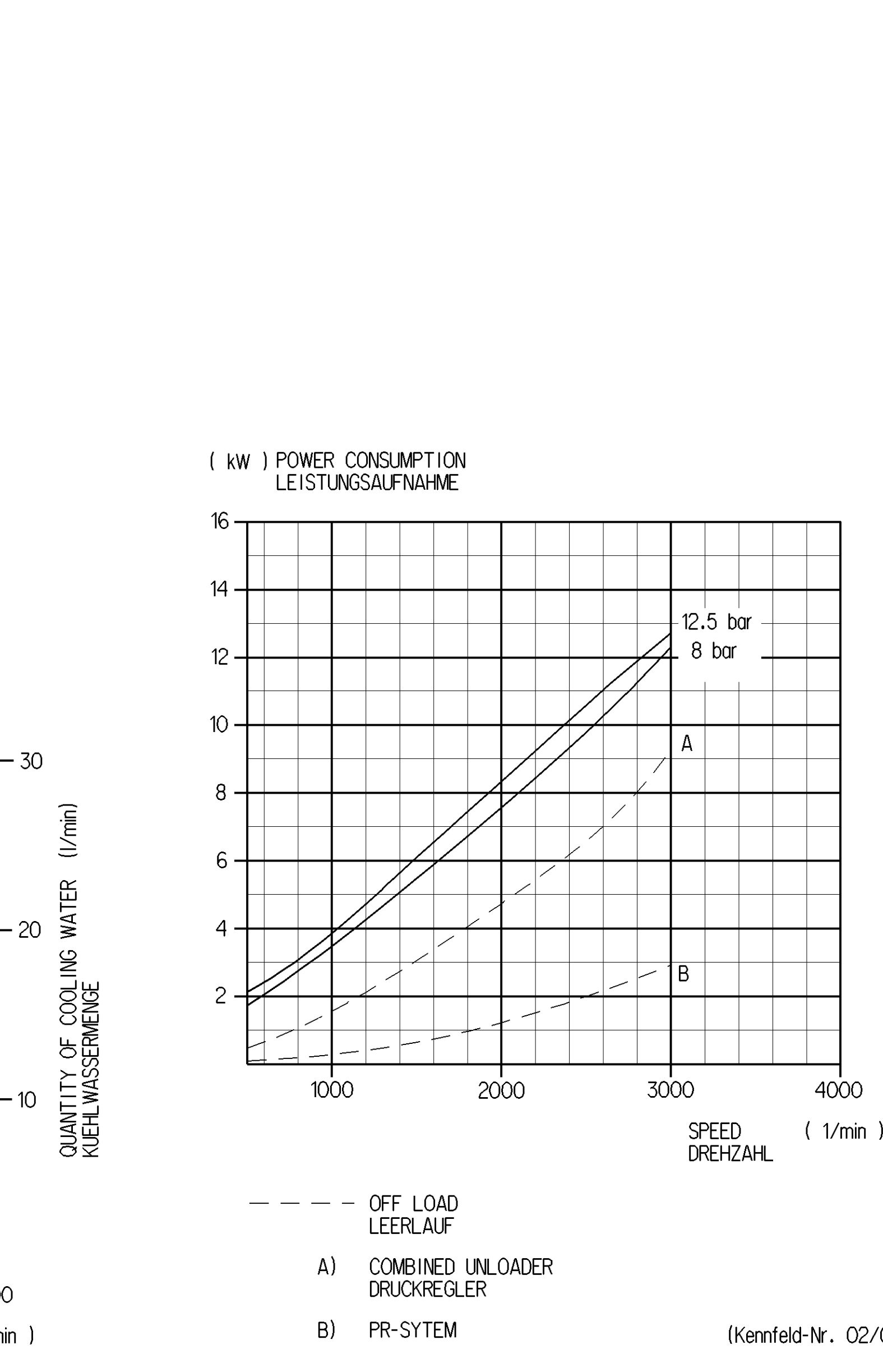
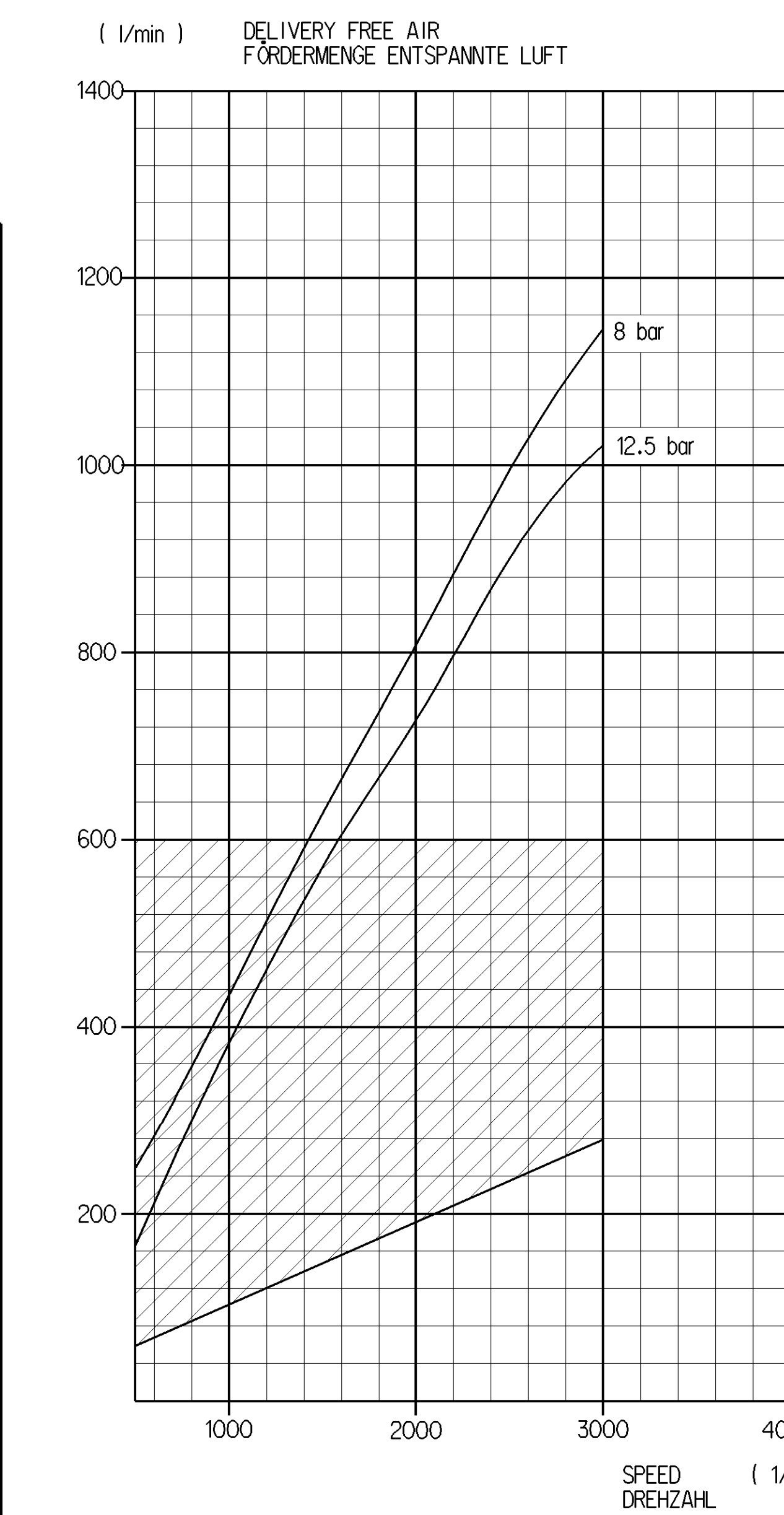
8.1 OIL SUPPLY DRUCKÖLANSCHLUSS  $M \leq 25 \text{ Nm}$

8.2 OIL DRAIN ÖLRÜCKLAUF

9 COOLANT CONNECTION KÜHLMITTELANSCHLUSS  $M \leq 35 \text{ Nm}$



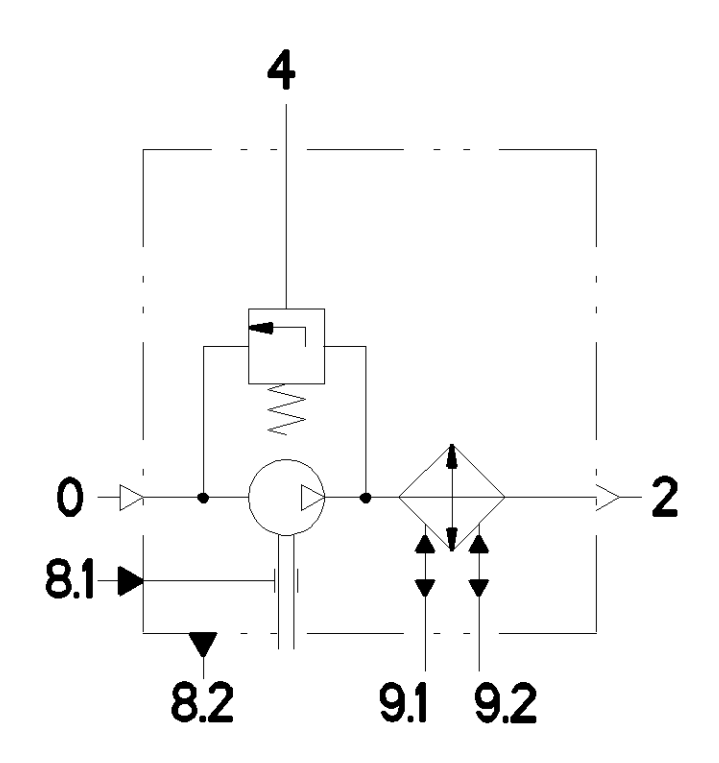
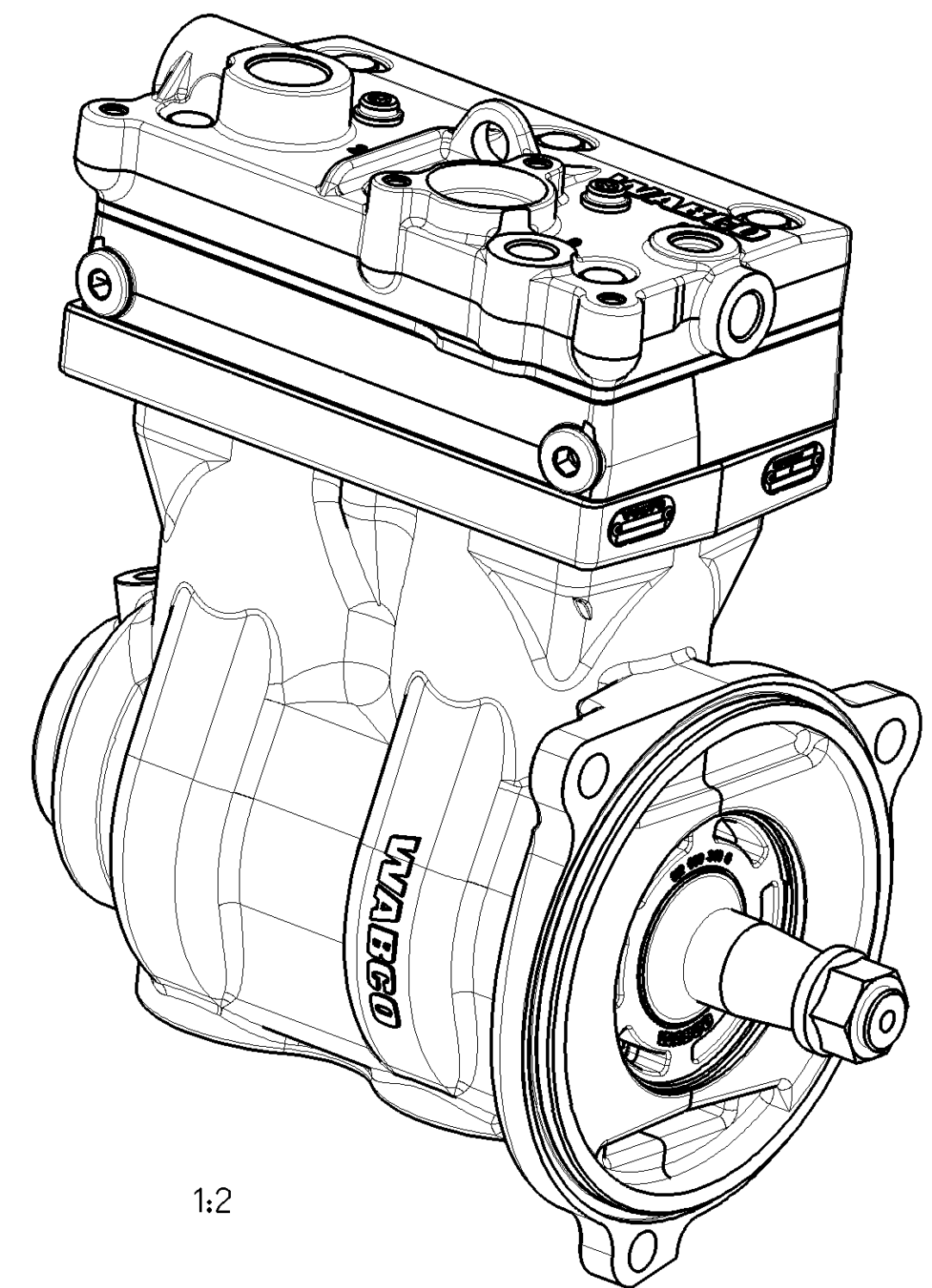
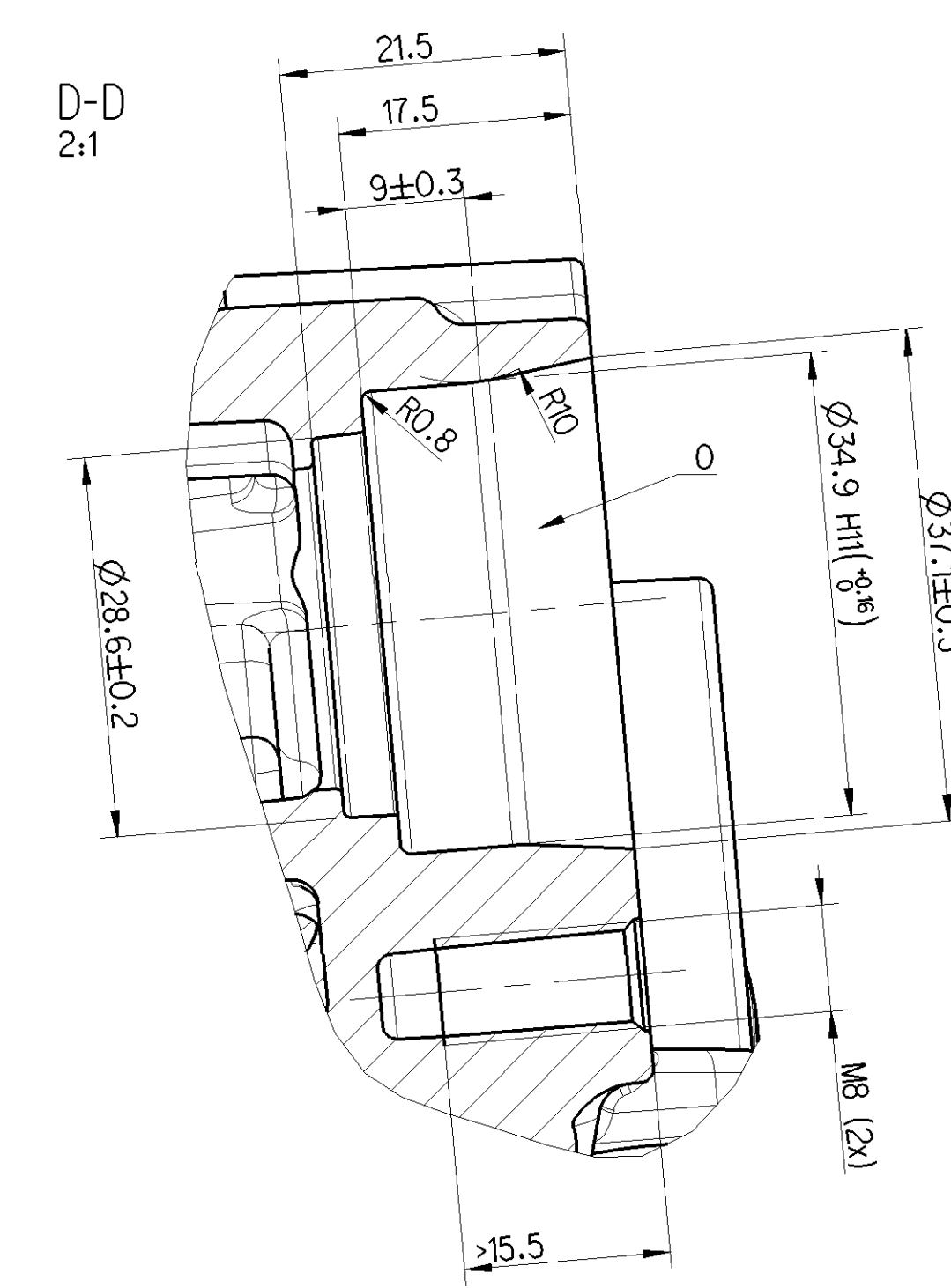
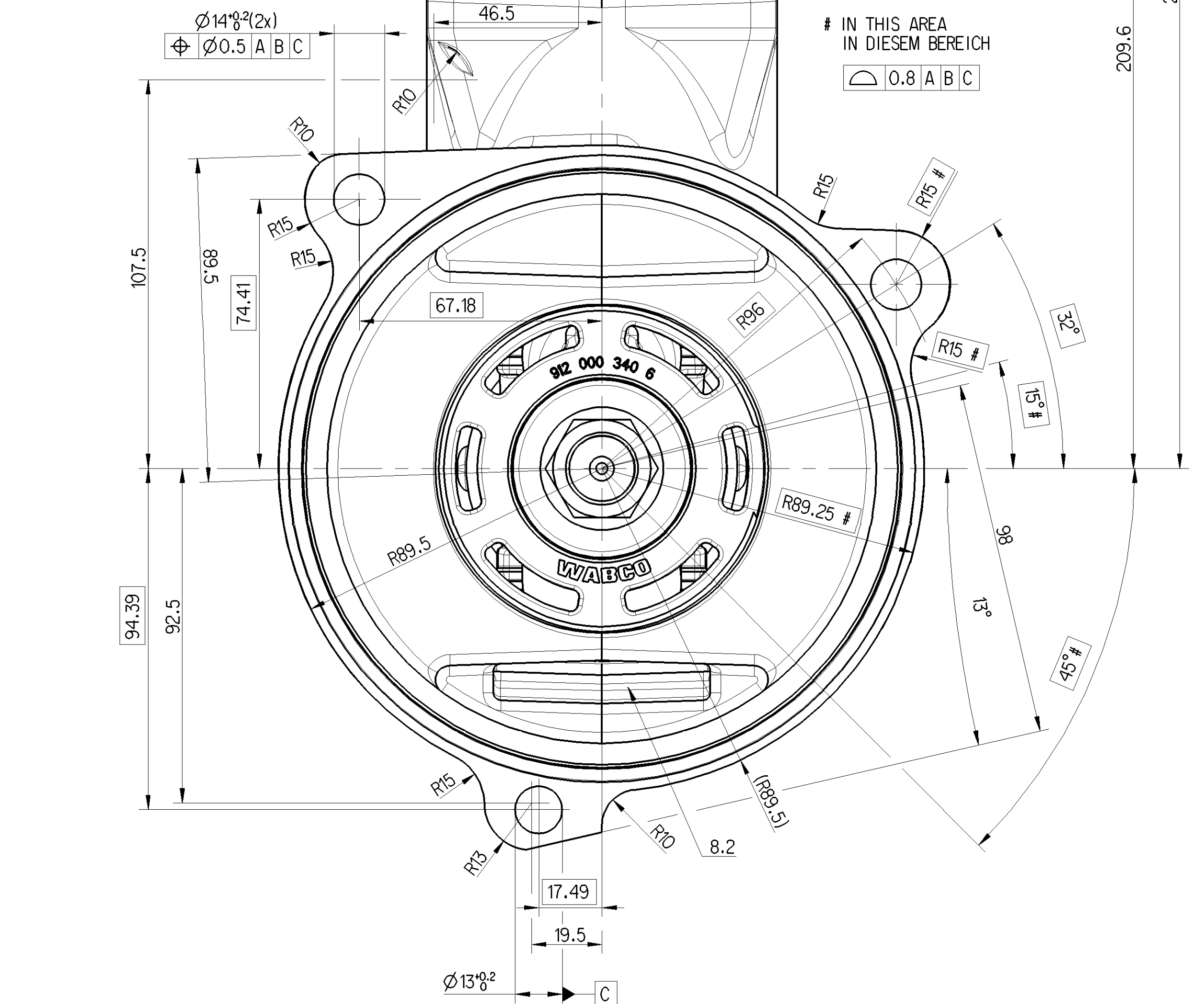
- 0 SUCTION PORT SAUGANSCHLUSS
- 2 DISCHARGE PORT DRUCKANSCHLUSS  $M \leq 150 \text{ Nm}$
- 4 GOVERNOR PORT STEUERANSCHLUSS  $M \leq 25 \text{ Nm}$
- 8.1 OIL SUPPLY DRUCKÖLANSCHLUSS  $M \leq 25 \text{ Nm}$
- 8.2 OIL DRAIN ÖLRÜCKLAUF
- 9 COOLANT CONNECTION KÜHLMITTELANSCHLUSS  $M \leq 35 \text{ Nm}$



HOLE MUST BE FREE FOR BREATH  
 BOHRUNG MUSS FREI FÜR BE-ENTLÜFTUNG SEIN

CUSTOMER PARMA CODE (SUPPLIER NUMBER):  
 KUNDEN PARMA KENNZAHL (LIEFERANTEN-NR.):  
 GRONAU (GERMANY): 6943  
 WROCLAW (POLAND): 32896  
 CAMPINAS (BRAZIL): 32877  
 CHARLESTON (USA): 63007  
 CHENNAI (INDIA): 7734  
 MNC (INDIA): 41824

DATE CODING: 1 = MONDAY,  
 2 = TUESDAY ... 7 = SUNDAY  
 TAGESKENNZAHL: 1 = MONTAG,  
 2 = DIENSTAG ... 7 = SONNTAG



COMPRESSOR WITH OPTIMIZED PISTON  
 KOMPRESSOR MIT OPTIMIERTEN KOLBEN

General Specifications		Copyright		WABCO	
Further Technical Data	412 704 027 0	Year	2016	Model No.	412 704 027 7
Doc. Code	035	Sheet	1 to 7	Date of 1st issue	2016-04-12
General Tolerances: ISO 201		Grosskopf		TWIN CYLINDER COMPRESSOR	
Surface Tolerances: ISO 130		Jaxxer		ZWEI ZYLINDER KOMPRESSOR	
Range of Nominal Dimensions (d in mm)		GROSSKOPF		Material No.	
Class	0 to 50	0.50	1.00	1.50	2.00
Medium	50 to 180	1.80	2.50	3.50	5.00
Large	180 to 400	4.00	5.50	7.50	10.00
Very Large	400 to 1000	10.00	15.00	20.00	30.00
Size	ISO 201	1:1		412 704 027 7	
Scale	ISO 201	1:1		005 DE 1/1	
Tapped Holes acc. ISO 102	170307		1 x A		500