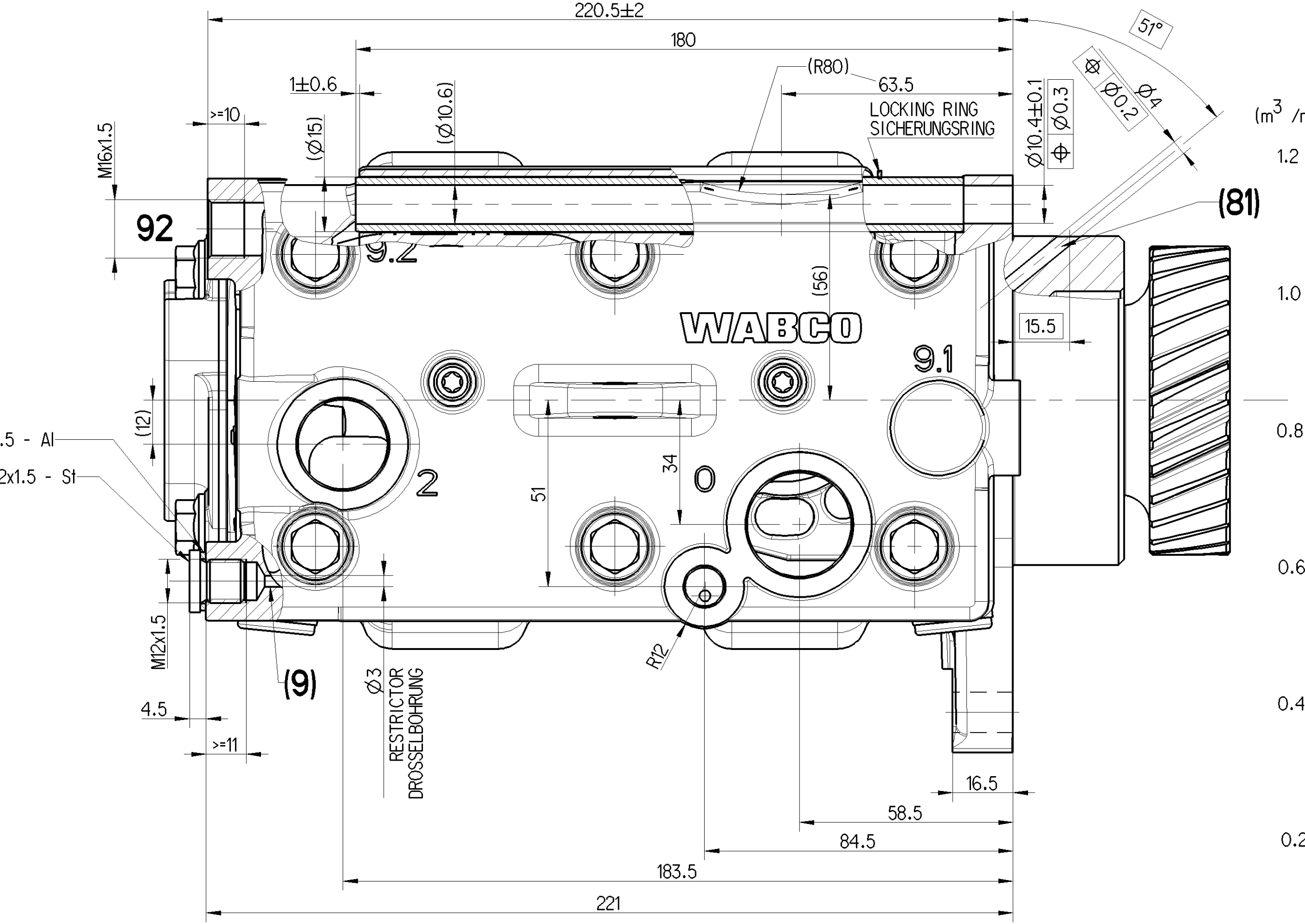


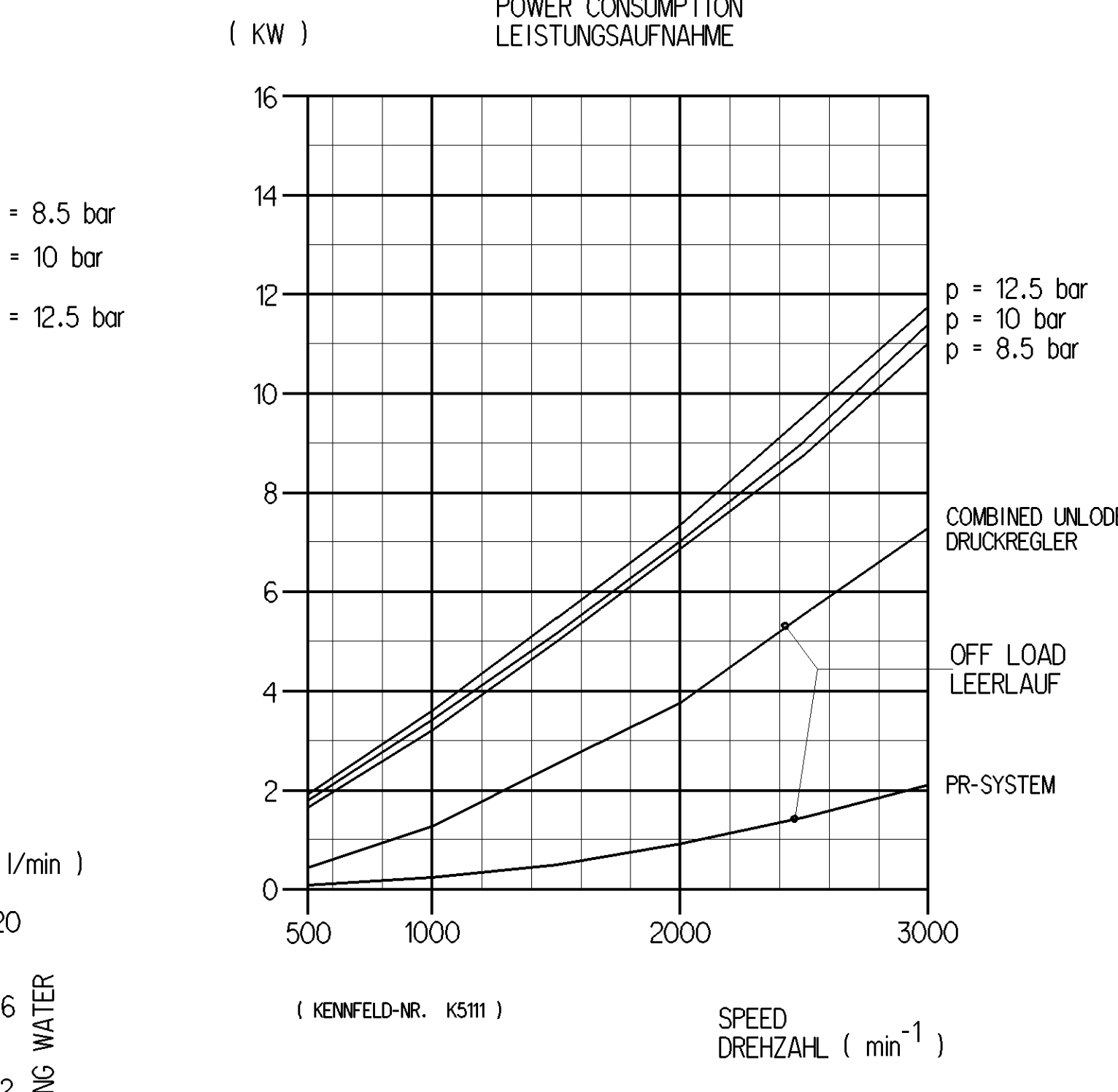
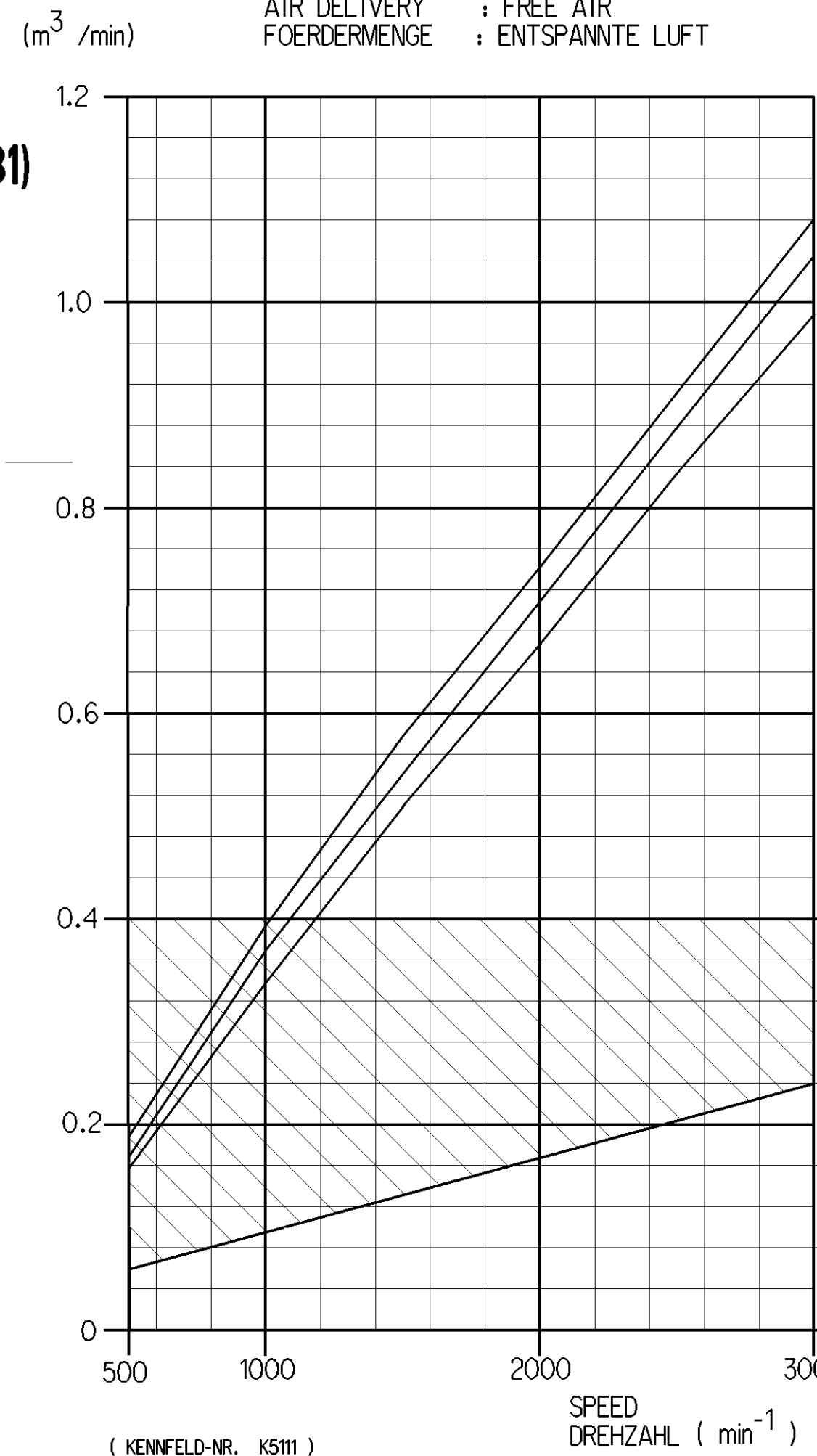
WORKING MEDIUM: AIR LUFT
COOLANT MEDIUM: WATER WITH ANTI-FREEZE WASSER MIT FROSTSCHUTZ
BORE: $\varnothing 85 \text{ mm}$
STROKE: 56 mm
SWEEP VOLUME: 636 cm^3
MAX. WORKING SPEED: $n_{max} = 3000 \text{ min}^{-1}$
OVERSPEED (TEMPORARILY < 4 Sec.): UEBERDREHZAH (KURZZEITIG < 4 Sek.): $n_{ue} = 1.3 \times n_{max}$
SURFACE PROTECTION: OBERFLAENCHENSCHUTZ

MAX. WORKING PRESSURE: $p_e = 12.5 \text{ bar}$
MAX. PRESSURE AT DISCHARGE PORT: HOECHSTDRUCK AM DRUCKANSCHLUSS: $p_e = 16 \text{ bar}$
END PLAY OF CRANKSHAFT: AXIALSPIEL DER KURBELWELLE: 0.1...0.45 mm
LUBRICATION: LUBRICATION SUPPLIED FROM ENGINE SCHMIERART: UMLAUFSCHEMUNG MIT DRUCKLOEANSCHLUSS
PORTS PROTECTED: ANSCHLUESSE GESCHUETZT

MAX. PERMISSIBLE TILT DURING CONTINUOUS WORKING: MAX. ZULAESSIGE NEIGUNG IM DAUERBETRIEB:



- 0 = INLET PORT SAUGANSCHLUSS M : < 120 Nm
- 2/21/22 = DISCHARGE PORT DRUCKANSCHLUSS M : < 100 Nm
- 4 = GOVERNOR PORT STEUERANSCHLUSS M : < 25 Nm
- 81 = OIL SUPPLY DRUCKLOEANSCHLUSS
- 82 = OIL DRAIN OELRUECKLAUF
- 91 = COOLANT CONNECTION KUEHLMITTELANSCHLUSS
- 92 = DISCHARGE PORT DRUCKANSCHLUSS
- 91 ↔ 92 DIRECTIONS OF FLOW DURCHSTROMRICHTUNGEN
- 91/92 DIRECTIONS OF FLOW DURCHSTROMRICHTUNGEN
- 91/92 M : < 35 Nm
- (9) = VENTING PORT ENTLUEFTUNGSANSCHLUSS M : < 25 Nm
- (...) AUXILIARY DIMENSION HILFSSMASS



VERSION AUSFUEHR.	WABCO-ID-NUMBER	WABCO-NUMMER	DENOMINATION	BENENNUNG	CUSTOMER-NUMBER	KUNDEN-NUMMER	ZGS	PR-SYSTEM	FR-REGELUNG	MASS	GEWICHT	COMMENT	BEMERKUNG	DISCHARGE PORT 21	DRUCKANSCHLUSS 21	DISCHARGE PORT 22	DRUCKANSCHLUSS 22	STATUS QLO	AKTUELLER STAND	SPECIAL CHARACTERISTICS	BESONDERE MERKMALE
VI	912 510 201 0	TWIN CYLINDER COMPRESSOR	ZWEIZYLINDER-KOMPRESSOR	457 130 72 15	001	NO NEIN	20.795	kg	NO NEIN	20.795	kg	VARIATION OF CONSTRUCTION SEE SHEET 3	ARBEICHERNE DARSTELLUNG AUF BLATT 3	OPEN	OFFEN	CLOSED	VERSCHLOSSEN	REPLACEMENT FOR 912 510 106 0	457 130 106 15	Q1 - CYLINDER HEAD 912 510 808 2 WITH EYE DRUCKKLUSS ZYLINDERKOPF 912 510 808 2 MIT OEGE	
V	912 510 200 0	TWIN CYLINDER COMPRESSOR	ZWEIZYLINDER-KOMPRESSOR	457 130 69 15	001	NO NEIN	20.728	kg	NO NEIN	20.728	kg	VARIATION OF CONSTRUCTION SEE SHEET 2	ARBEICHERNE DARSTELLUNG AUF BLATT 2	CLOSED	VERSCHLOSSEN	OPEN	OFFEN	REPLACEMENT FOR 911 533 203 0	457 130 47 15	Q1 - CYLINDER HEAD 912 510 808 2 WITH EYE DRUCKKLUSS ZYLINDERKOPF 912 510 808 2 MIT OEGE	
IV	912 510 104 0	TWIN CYLINDER COMPRESSOR	ZWEIZYLINDER-KOMPRESSOR	457 130 71 15	002	YES 2-PISTON-PR JA 2-KOLBEN-PR	20.850	kg	YES 2-PISTON-PR JA 2-KOLBEN-PR	20.850	kg	VARIATION OF CONSTRUCTION SEE SHEET 2	ARBEICHERNE DARSTELLUNG AUF BLATT 2	OPEN	OFFEN	CLOSED	VERSCHLOSSEN	REPLACEMENT FOR 912 510 104 0	457 130 49 15	Q1 - CYLINDER HEAD 912 510 808 2 WITH EYE DRUCKKLUSS ZYLINDERKOPF 912 510 808 2 MIT OEGE	
III	912 510 103 0	TWIN CYLINDER COMPRESSOR	ZWEIZYLINDER-KOMPRESSOR	457 130 70 15	002	YES 2-PISTON-PR JA 2-KOLBEN-PR	20.823	kg	YES 2-PISTON-PR JA 2-KOLBEN-PR	20.823	kg	VARIATION OF CONSTRUCTION SEE SHEET 2	ARBEICHERNE DARSTELLUNG AUF BLATT 2	CLOSED	VERSCHLOSSEN	OPEN	OFFEN	REPLACEMENT FOR 912 510 103 0	457 130 48 15	Q1 - CYLINDER HEAD 912 510 808 2 WITH EYE DRUCKKLUSS ZYLINDERKOPF 912 510 808 2 MIT OEGE	
II	912 510 203 0	TWIN CYLINDER COMPRESSOR	ZWEIZYLINDER-KOMPRESSOR	457 130 73 15	001	NO NEIN	20.749	kg	NO NEIN	20.749	kg	VARIATION OF CONSTRUCTION SEE SHEET 2	ARBEICHERNE DARSTELLUNG AUF BLATT 2	CLOSED	GESCHLOSSEN	OPEN	OFFEN	REPLACEMENT FOR 912 510 104 0	457 130 49 15	Q1 - CYLINDER HEAD 912 510 808 2 WITH EYE DRUCKKLUSS ZYLINDERKOPF 912 510 808 2 MIT OEGE	
I	911 533 007 0	TWIN CYLINDER COMPRESSOR	ZWEIZYLINDER-KOMPRESSOR	457 130 66 15	002	YES 1-PISTON-PR JA 1-KOLBEN-PR	18.933	kg	YES 1-PISTON-PR JA 1-KOLBEN-PR	18.933	kg	VARIATION OF CONSTRUCTION SEE SHEET 2	ARBEICHERNE DARSTELLUNG AUF BLATT 2	OPEN	OFFEN	-	-	REPLACEMENT FOR 911 533 007 0	457 130 48 15	Q1 - CYLINDER HEAD WITH SANDCAST COVER ALTER ZYLINDERKOPF MIT SANDGUSSENDECKEL	

1-CYL. COMPRESSOR
1-ZYL.-KOMPRESSOR

FURTHER TABULAR DRAWING WEITERE TABELLENZEICHNUNGEN 412 352 050 0 A 457 130 74 15

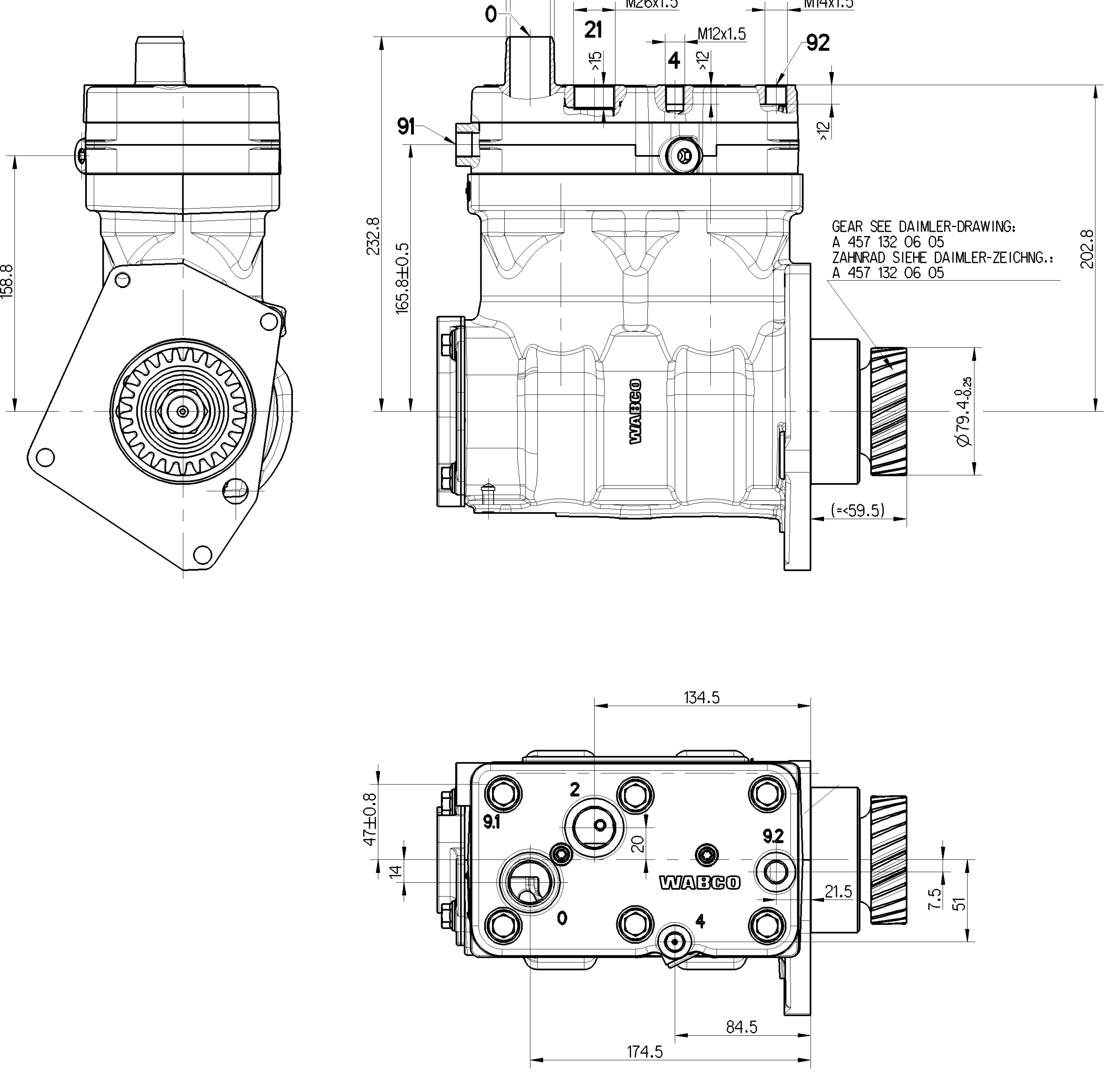
VERSION AUSFUEHR.: I, III, IV
VERSION AUSFUEHR.: II, V, VI

TWIN CYLINDER COMPRESSOR
ZWEIZYLINDER-KOMPRESSOR

Material No. 912 510 110 0

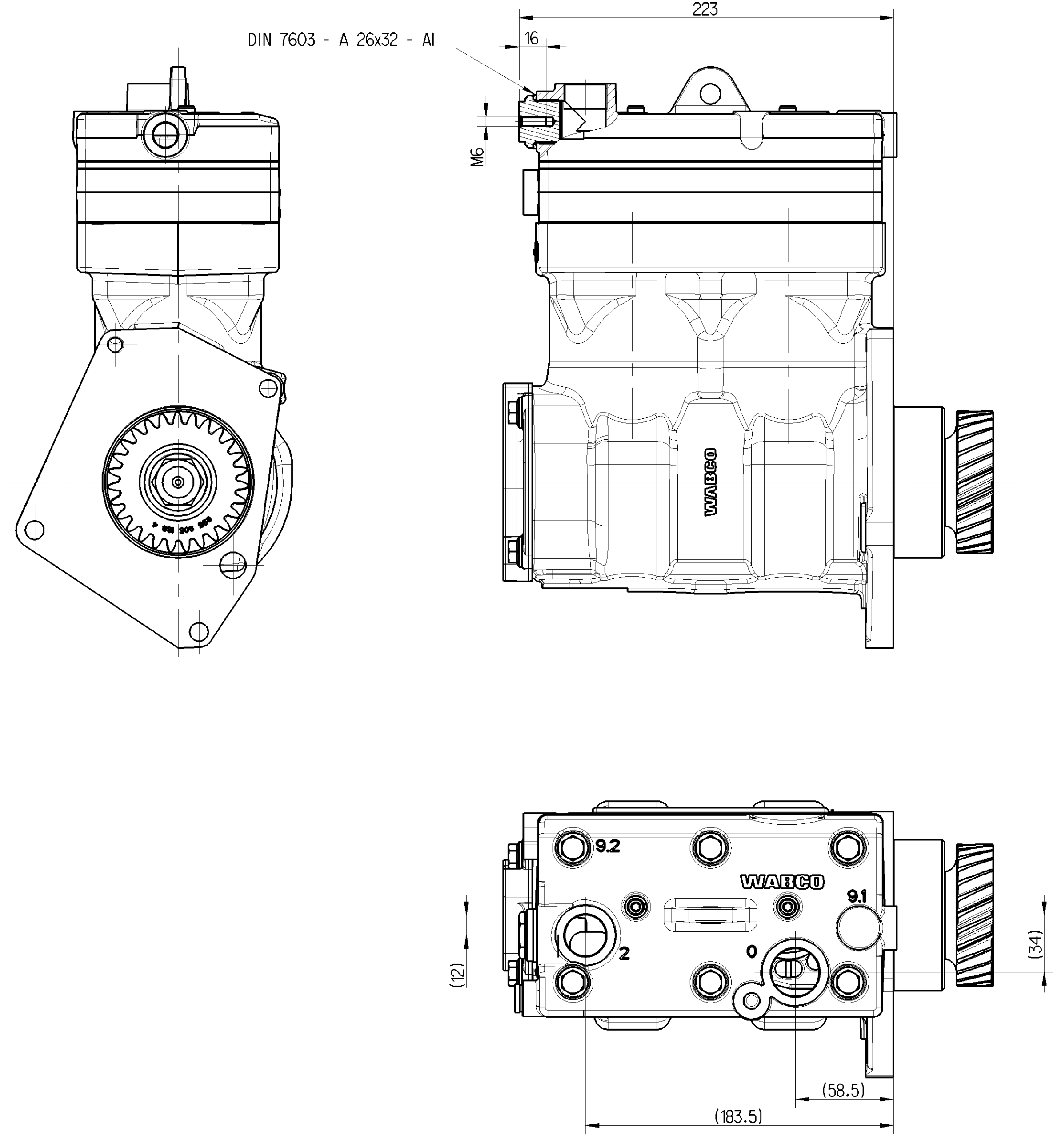
Doc. Code: 053 DE 1/3

VERSION I 911 553 007 0



#) FURTHER TECHNICAL DATA
WEITERE TECHNISCHE DATEN: 911 553 007 0 - DOC. 035 - SHEET 1/5 to 5/5

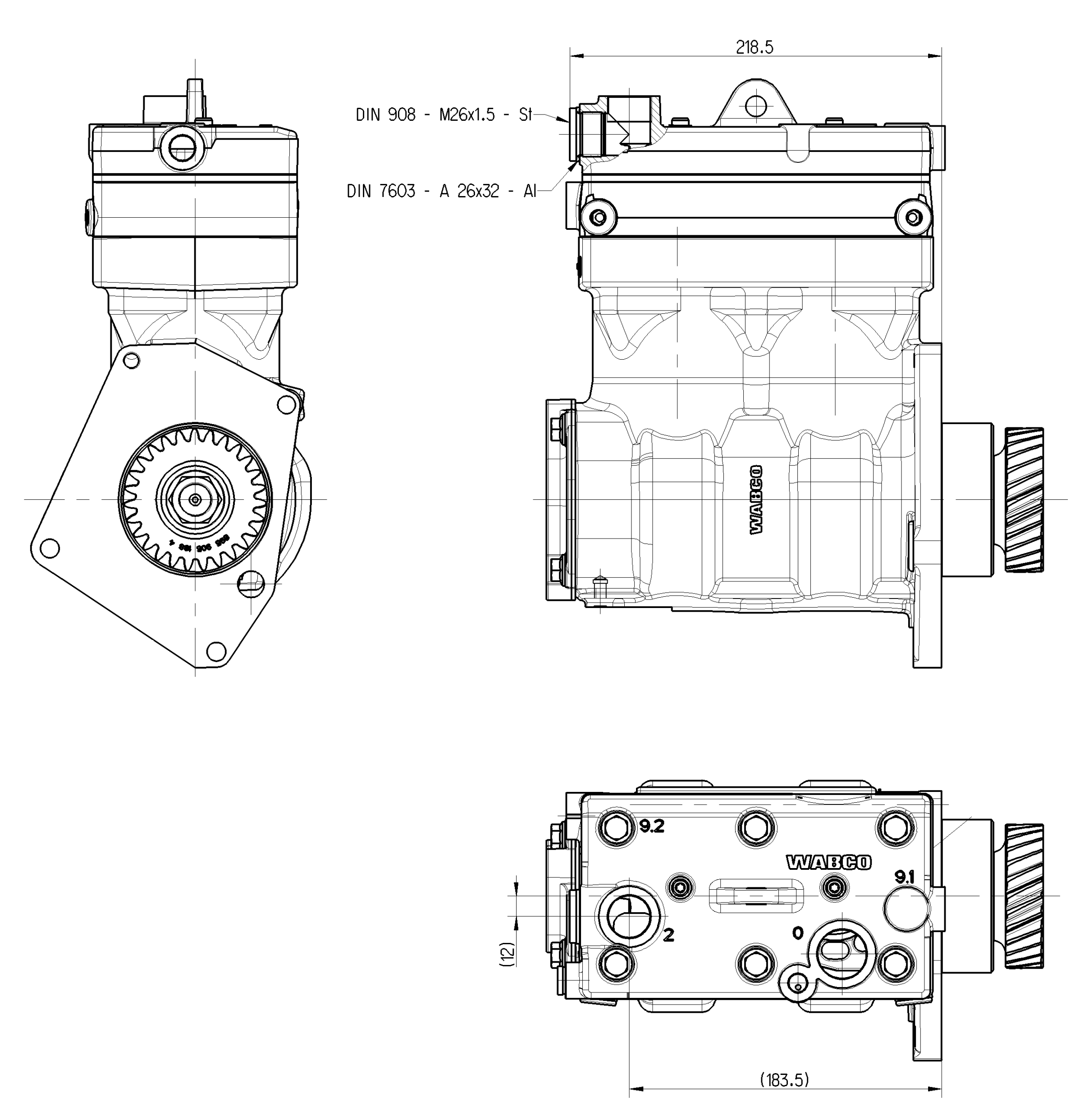
VERSION II 912 510 203 0



#) FURTHER TECHNICAL DATA
WEITERE TECHNISCHE DATEN: 912 510 203 0 - DOC. 035 - SHEET 1/5 to 5/5

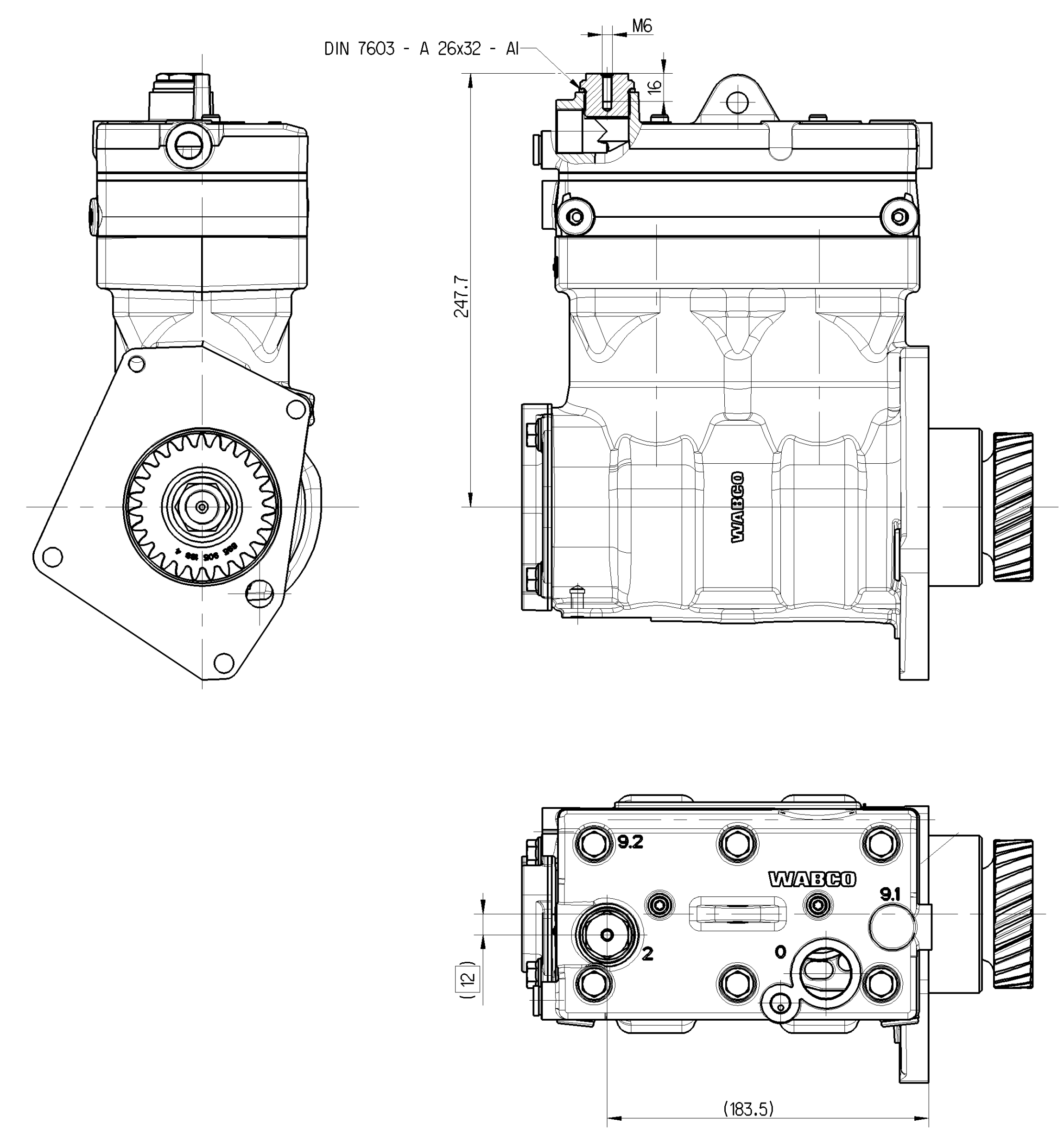
VERSION WITHOUT POWER REDUCTION SYSTEM
AUSFUEHRUNG OHNE POWER REDUCTION SYSTEM

VERSION III 912 510 103 0



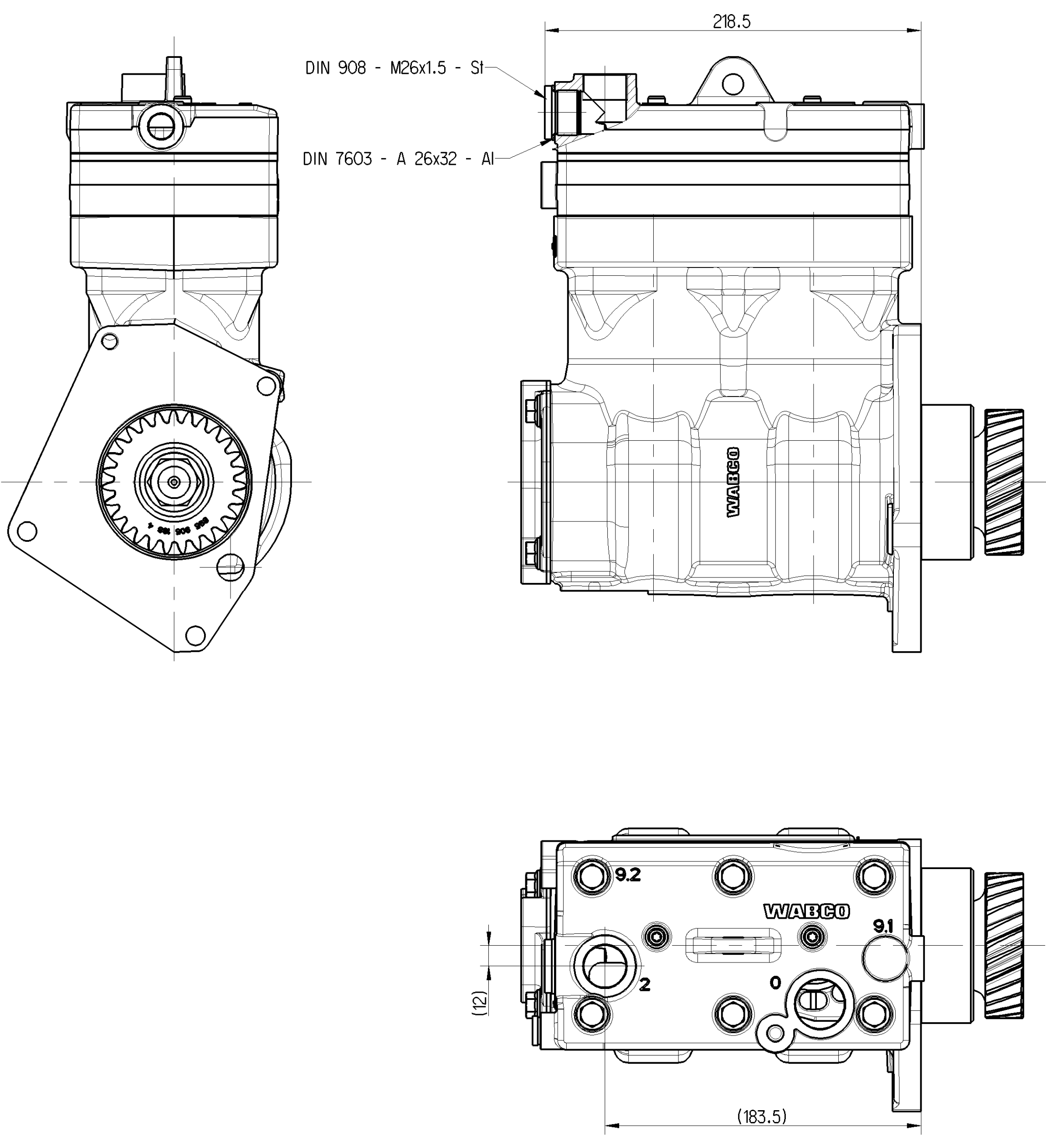
#) FURTHER TECHNICAL DATA
WEITERE TECHNISCHE DATEN: 912 510 103 0 - DOC. 035 - SHEET 1/5 to 5/5

VERSION IV 912 510 104 0



#) FURTHER TECHNICAL DATA
WEITERE TECHNISCHE DATEN: 912 510 104 0 - DOC. 035 - SHEET 1/5 to 5/5

VERSION V 912 510 200 0



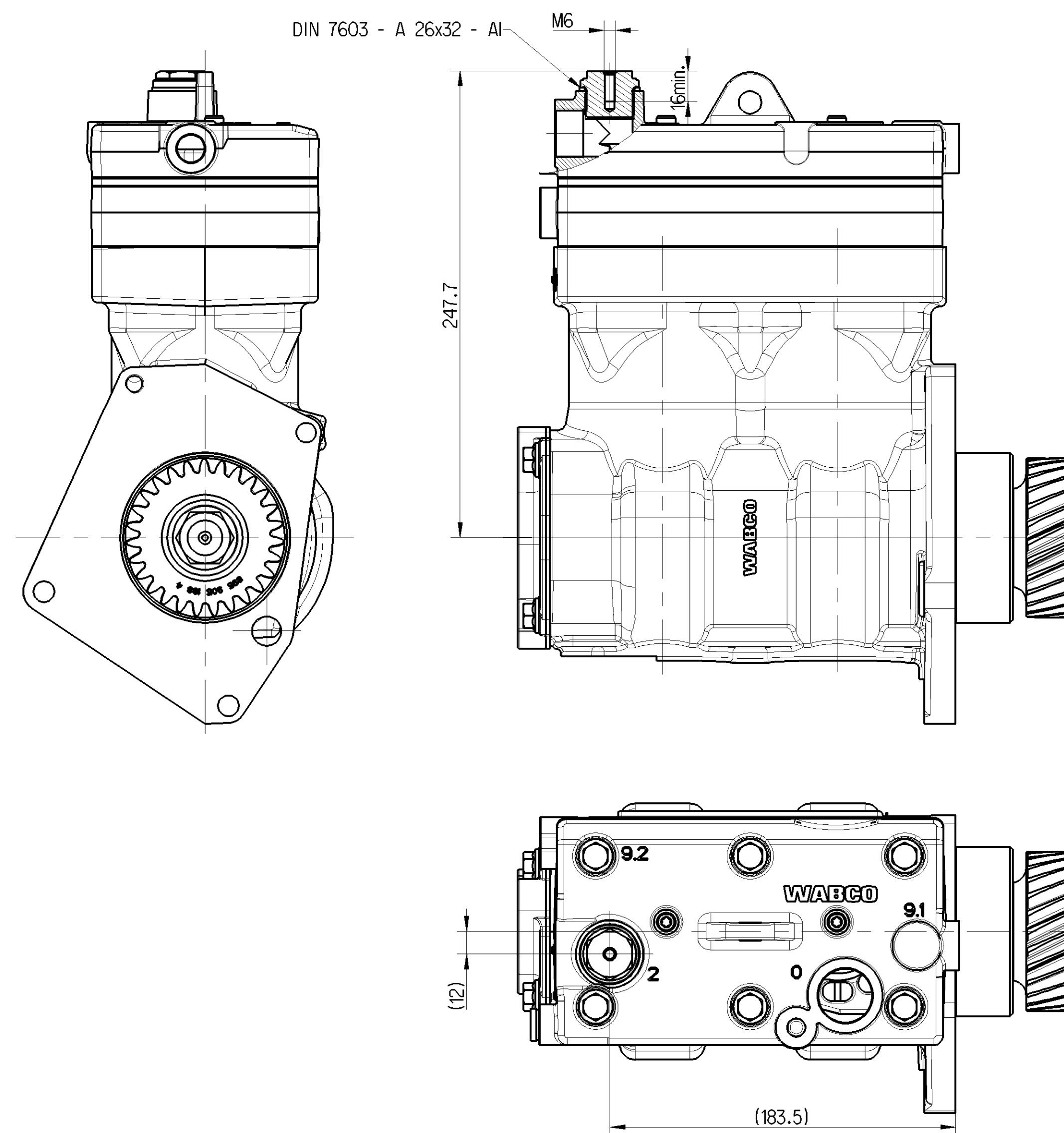
#) FURTHER TECHNICAL DATA
WEITERE TECHNISCHE DATEN: 912 510 200 0 - DOC. 035 - SHEET 1/5 to 5/5

VERSION WITHOUT POWER REDUCTION SYSTEM
AUSFUEHRUNG OHNE POWER REDUCTION SYSTEM

This document contains technical data for WABCO products. It is the property of WABCO and is not to be distributed, copied, or used in any way without the written consent of WABCO. The information in this document is for reference only and does not constitute a contract. WABCO is not responsible for any errors or omissions in this document.

Further Technical Data #1		Date		Sheet		Spectra	
Doc. Code		2014-06-12		Pretsch			
General Tolerances ISO 2011		2015-01-20		Durs		Joeger	
Range of Nominal Dimensions (d, mm)							
Class	IT 10	IT 9	IT 8	IT 7	IT 6	IT 5	IT 4
Fine	0.5	1.0	1.5	2.0	3.0	4.0	5.0
Medium	1.0	2.0	3.0	4.0	5.0	6.5	8.0
Coarse	2.0	3.0	4.0	5.0	6.5	8.0	10.0
Trapped Holes acc. ISO 1502							
Tolerances Class Applied/Conformant							
Copyright WABCO				Material No.		Date of 1st Issue	
WABCO				912 510 110 0		2014-06-12	
TWIN CYLINDER COMPRESSOR				053 DE		2/3	
ZWEIZYLINDER-KOMPRESSOR				1:2		1:2	
SEE TABLE				A 0		1670 1 x 0 500	

VERSION AUSFUEHR. VI 912 510 201 0



#) FURTHER TECHNICAL DATA
WEITERE TECHNISCHE DATEN: 912 510 201 0 - DOC. 035 - SHEET 1/5 to 5/5

VERSION WITHOUT POWER REDUCTION SYSTEM
AUSFUEHRUNG OHNE POWER REDUCTION SYSTEM

General Specification: AED-354-0	Copyright WABCO®	WABCO	
Further Technical Data: #1	Date: 2014-06-12	Sheet: 1	Spec: P01
Doc. Code: 2014-06-12	Sheet: P01	TWIN CYLINDER COMPRESSOR ZWEIZYLINDER-KOMPRESSOR	
General Tolerances: AED-201	2015-01-20	Author: J. Jäger	Drawn: J. Jäger
Range of Nominal Dimensions (±, mm):			
+ 50 - 100			
0.5 - 1.0	1.5 - 2.0		
1.0 - 2.0	3.0 - 4.0		
2.0 - 3.5	5.0 - 6.5		
SEE TABLE	Scale: 1:2	Material No.: 912 510 110 0	Date of 1st Issue: 2012-08-28
ISO System	ISO System	Doc. Code: 053 DE	Sheet: 3/3
Trapped Holes acc. AED-152	ISO System	ISO System	Replacement for
11. Tolerances Class Applied: Conventional	A 0	ISO System	ISO System