

LC5 APPLICATIONS DIFFERENT VERSIONS



The LC5 rear lamp has many OE applications, visually you may think that the different versions are similar but there are some exceptions compared to the standard lamp.

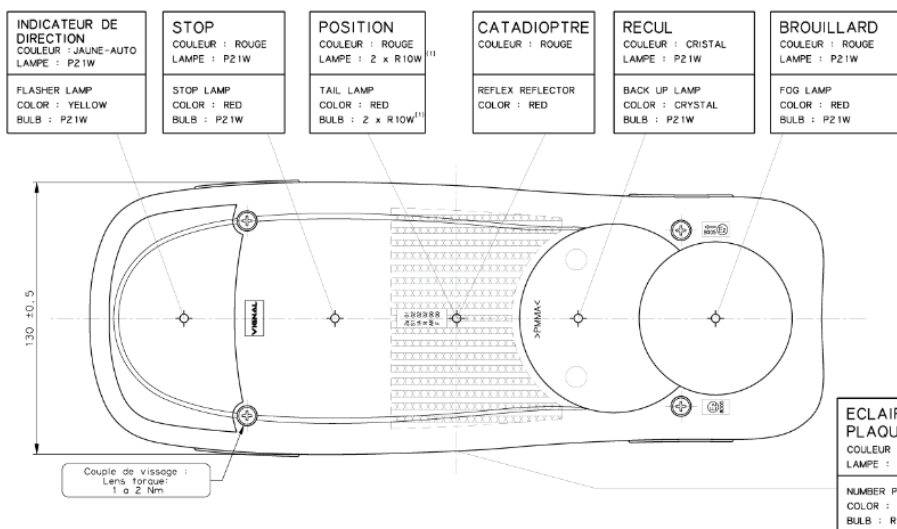
Hereunder, we explain to you what are these differences and why they require to purchase new references.

LC5 - standard application

References : 152130 - 152140 - 152150 - 152160 - 152170 - 152180 - 152190 - 152200 - 153120 - 153040 - 153050 - 153060 - 153070

Characteristics : 2 rear screws spacing 152 mm, Spots for 1 fog lamp P21W, 1 reverse lamp P21W, 2 position lamps R10W, 1 stop lamp P21W, 1 direction indicator lamp P21W.

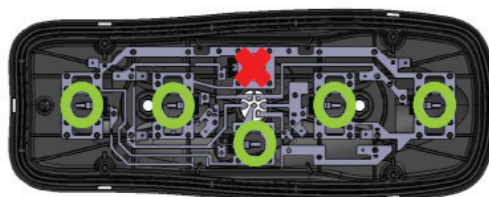
| DETAIL CONNECTEUR 1.5 Echelle 2 : Connector detail Scale 2: | Reperage des fonctions dans connecteur Pinning in the connector | FUNCTION FUNCTION |
|---|--|--------------------------------------|
| | 1 | MASSE EARTH |
| | 2 | POSITION TAIL |
| | 3 | RECU BACK UP |
| | 4 | INDICATEUR DE DIRECTION INDICATOR |
| | 5 | STOP STOP |
| | 6 | BROUILLARD FOG |
| | 7 | NOT USED |



LC5 - FIAT DUCATO -CITROEN JUMPER - PEUGEOT BOXER

References : 153270 - 153280

What's changing : 4 rear screws spacing 190 mm and 60 mm. The rear lamp is designed to accommodate 1 single R10W position lamp on the lower part of the lamp. If we install a bulb on the upper part, it will not turn on.



LC5 - IVECO EUROCARGO - STRALIS - TRAKKER

References : 153210 - 153220 - 153230

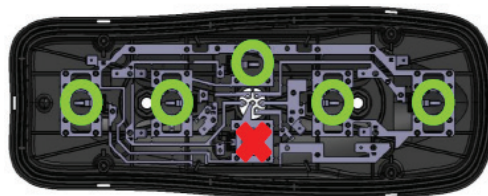
What's changing : The rear lamp is designed to accommodate 1 single R10W position lamp on the upper part of the lamp. If we install a bulb on the lower part, it will not turn on.

References : 153200

What's changing : On the license plate version, we install 2 bulbs for the position and license plate functions as well as a cover on the lower part of the lens.

References : 153240 - 153250 - 153260

What's changing : In vertical mounting, only the external position lamp of the vehicle can be switched on.



| CONNECTOR | FUNCTION |
|-----------|--|
| 1 | MASSE / EARTH |
| 2 | POSITION / TAIL |
| 3 | RECUL / BACK UP |
| 4 | INDICATEUR / INDICATOR |
| 5 | STOP |
| 6 | BROUILLARD / FOG |
| 7 | Number plate lamp for LEFT REAR LAMP Reverse alarm for RIGHT REAR LAMP |

LC5 - RENAULT

References : 152000 - 152020 - 152050 - 152070 - 152520 - 152620

What's changing : The reverse and top position functions are inactivated.

References : 152010 - 152030 - 152040 - 152060 - 152500 - 152510 - 152600 - 152610

What's changing : The fog and top position functions are inactivated.

References : 152880

What's changing : Only one of the two position lamps can be switched on.

